



**Chalkie White**  
083 650 5972  
chalkie@dalmax.co.za

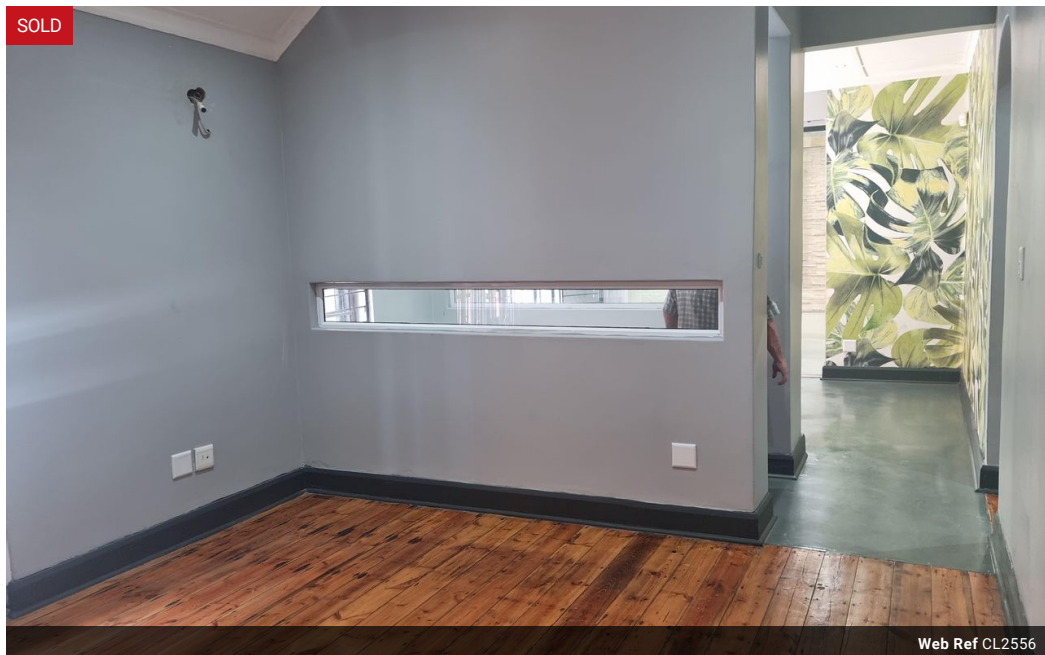


**Tommy Pullen**  
084 720 4645  
tommy@dalmax.co.za

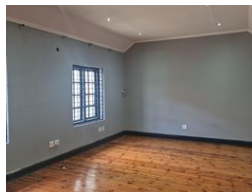
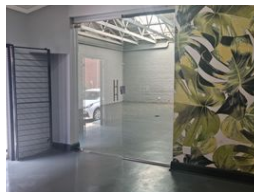
Contact Dalmax

031 764 1525

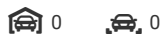
Office 2 Bronzite Block  
Abrey Eco Park  
5 Abrey Road  
Kloof  
3610



Web Ref CL2556



R4,100,000



### Exceptional Commercial/Industrial Property for Sale in Windermere!

Discover the perfect business space just off Umgeni Rd.  
This impressive 310sqm property offers a blend of functionality and style, catering to a range of commercial and industrial needs.

Key Features:

?? Property Overview:

Total Area: 310sqm  
Convenient Location: Just off Umgeni Rd.  
Versatile Layout: 130sqm of offices and a boardroom with charming wooden floors.  
Spacious Warehouse: 180sqm with new epoxy coated flooring and a generous 5-meter height.  
?? Ideal Usage:

Perfect for Churches: Ample space for congregations and activities.  
Showroom Ready: Showcase your products in a spacious and versatile environment.  
Versatile Commercial Space: Tailor the property to suit your specific business needs.  
?? Additional Information:

### Features

**Zoning** Industrial

**Sizes**

Floor Size 310m<sup>2</sup>  
Building Height 5m

